

## UNICIMA CORPORATION

Kitamura Bldg. 2-6-16 Yaesu Chuo-ku, Tokyo 104-0028, Japan.

Tel: 81-3-3516-1020 Fax: 81-3-3272-1281 t.nakamikawa@unicima.com <http://www.unicima.com>

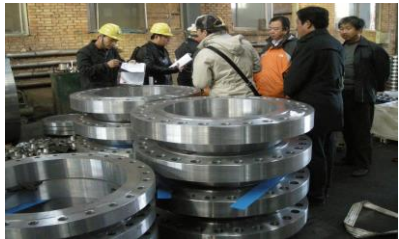
### FLANGE, FITTING & PIPE Supply Record & Photo

CLIENT	PRODUCT	MATERIAL	STANDARD	PRESSURE RATING	SIZE	QUANTITY / YEAR	UNIT
<b>OIL</b>	SS TUBE SMLS / WELDED	A269 / A213 / A249 TP304, 304L, 316, 316L, 321	ASTM	1,000PSI	1/8" TO 4"	30,000	PCS
<b>GAS</b>	SS PIPE SMLS	A312 TP304, 304L, 316, 316L, 321	ASTM	SCH.5S, 10S, 40S, 80S, 160S	1/4" TO 16"	10,000	PCS
<b>CHEMICAL</b>	SS PIPE WELDED	A312 / A778 TP304, 304L, 316, 316L, 321	ASTM	SCH.5S, 10S, 40S, 80S	1/4" TO 84"	50,000	PCS
<b>ORNAMENT</b>	SS PIPE WELDED, OUTSIDE POLISHED	A554 TP304, 202, 201	ASTM		1/2" TO 10"	70,000	PCS
<b>SANITARY</b>	SS SANITARY TUBE, SMLS / WLEDED	A270 / DIN11850 TP304, 316	ASTM / DIN		1" TO 4"	4,000	PCS
<b>STEAM</b>	SS FLANGE ( SO, WN, BD, SW, NPT )	A182 F304, 304L, 316, 316L	ASTM / MSS	150# , 300#, 600#	1/2" TO 60"	500	MT
<b>WATER</b>	SS FLANGE ( SO )	A182 F304, 304L, 316, 316L	BS	150#	28" TO 40"	50	MT
<b>MINING</b>	SS FLANGE ( BACK-UP )	A182 F304, 304L, 316, 316L	ASTM/AWWA	150# . 300#	UP TO 104"	100	MT
<b>PULP</b>	SS FLANGE ( SO, WN, PLATE )	A182 F304, 304L, 316, 316L	AWWA C207	CLASS B, D, E	3" TO 96"	100	MT
	SS FITTING, BUTT WELD	A403 WP304, 304L, 316, 316L	ASTM	SCH.10S, 40S, 80S	1/2" TO 48"	3,000	MT
	SS FITTING, HIGH PRESSURE	A182 F304, 304L, 316, 316L	ASTM	3000#, 6000#, 9000#	1/8" TO 4"	50	MT
	SS FITTING. SCREWED	A351 CF8, CF8M	ASTM	150#	1/8" TO 4"	150	MT
	SS FITTING, SANITARY	AISI 304, 316	3A, SMS, DIN		1" TO 4"	100	MT
	SS FITTING, INSTRUMENTATION	AISI 316			1/4" TO 1"	20	MT
	CS PIPE SMLS	A106, A53, API5L X70	ASTM	SCH.40, SCH.80	1/2" TO 24"	10,000	PCS
	CS BOLIER TUBE SMLS / WELDED	A179, A192 / A178, A226	ASTM		1" TO 4"	2,000	PCS
	CS PIPE WELDED	A106, A53, API5L X70	ASTM	SCH.10, 40, SCH.80	1/2" TO 68"	5,000	PCS
	CS 3LPE COATING PIPE	API 5L GR.B X65	ASTM	SCH.STD	6" TO 30"	3,000	PCS
	CS FLANGE	A105 / API	ASTM	150# TO 1500#	1/2" TO 60"	3,000	MT
	CS FLANGE	A105	AWWA C207	CLASS B, D, E	8" TO 70"	100	MT
	ALLOY STEEL FLANGE	A694 F60, 65, 70	ASTM / MSS	150# TO 900#	4" TO 42"	300	MT
	CS FITTING, BUTT WELD	A234 WPB	ASTM	SCH.40 TO SCH.160	1/2" TO 46"	600	MT
	CS FITTING, HIGH PRESSURE	A105	ASTM	3000#, 6000#, 900#	1/8" TO 4"	150	MT
	ALLOY FITTING BUTT WELD	A860 WPHY60, 65, 70	ASTM	SCH.40 TO SCH.160	12" TO 46"	50	MT
	FITTING MALLEBLE	A197	ASTM	150#, 300#	1/8" TO 6"	150	MT
	FITTING GROOVED	DUCTILE IRON	UL, FM		1" TO 20"	150	MT
	WEATHER-RESISTANT PLATE	COR-TEN				100	MT
	SS SHEET & COIL	AISI 304, 202, 201, AISI 430	ASTM		0.4MM TO 16MM	1,000	MT
	SS BAR (ROUND,FLAT, ANGLE)	AISI 304, AISI 316	ASTM		1/8" TO 4"	500	MT
	SPRINKLER		UL, FM			30,000	PCS

**UNICIMA CORPORATION**

Kitamura Bldg. 2-6-16 Yaesu Chuo-ku, Tokyo 104-0028, Japan.

Tel: 81-3-3516-1020 Fax: 81-3-3272-1281 t.nakamikawa@unicima.com <http://www.unicima.com>



**ASTM A694 F70 FLANGE 28" 600LBS WN RF SCH.14.28MM ASME B16.47 SERIE A  
HEAT TREATMENT AND QUENCHING**

BACK-UP FLANGE ASTM A182 F316

WELDOLET ASTM A694 F70

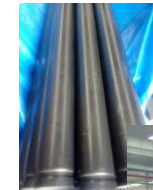


SUPER DUPLEX F51

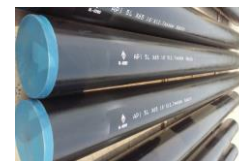
ASTM A234 WPB  
90DEG. ELBOW 30" x STD

ASTM A860 WPHY 65 BUTT WELD FITTING  
REDUCING TEE 32" x 26" SCH.0.75" x 0.688"

ASTM A234 WPB ELBOW



3LPE PIPE



API 5L X65 PIPE



GROOVED END PIPE



316L FLANGE, FITTING, SMLS PIPE

68" CARBON PIPE

**LSAW PIPE API 5L X70  
OD42" x 11.13MM x 6M  
AIR FREIGHT PACKAGE**





**SS SMLS PIPE A312**



**SS SMLS TUBE A269, A213  
& WOODEN CASE PACKAGE**



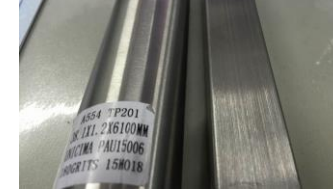
**A269 TP316 TUBE IN COIL  
(PVC COATING AVAILABLE)**



**SS WELDED PIPE A312 24"  
& STEEL CRATE PACKAGE**



**A554 TP201 TUBE OUTSIDE POLISHED  
ROUND & SQUARE TUBE**



**TRIPLE-ECCENTRIC BUTTERFLY VALVE**



**316SS VALVE**



**BUTTERFLY VALVE**



**FORGED VALVE**



**STUD BOLT & HEAVY NUTS  
FLUOROCARBON COATED  
(A193 B7 + A194 2H )**

**STAINLESS TEEL  
(A193 B8M CL.2 + A194 GR.8M)**

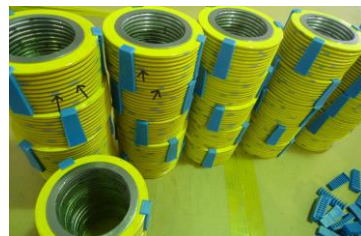
**ALLOY STEEL  
(A193 B7 + A194 2H)**



**SS SHEET AISI 304  
& PACKAGE**



**HITACHI MALLEABLE FITTINGS**



**SPIRAL WOUND GASKET**




**ROUND BAR PACKAGE**



**SPIRAL WELDED PIPE 2400MM**

**UCM BALL VALVE & GATE, GLOBE, CHECK, BUTTERFLY VALVES ETC & PHOTO**

CLIENT	PRODUCT	MATERIAL	STANDARD	PRESSURE RATING	SIZE	QUANTITY /YEAR	UNIT
<b>OIL</b>	<b>UCM BALL VALVE</b> 	A216 WCB / A105 / A182 CF8M / A182 F316	API 6D	150# TO 2500#	1/2" TO 36"	20,000	PCS
<b>GAS</b>	<b>PNEUMATIC ACTUATOR (UCM)</b>	DOUBLE ACTION / SINGLE ACTION					
<b>CHEMICAL</b>	<b>ELECTRIC ACTUATOR (UNICIMA)</b>	ROTARY & LINEAR TYPE	Electric Actuators are working in Japan a lot in PULP & PAPER Plants, where existing very severe conditions like high temperature, high humidity, <u>frquent vibration</u> etc				
<b>STEAM</b>							
<b>WATER</b>	SS BALL VALVE NPT END	A351 CF8 / CF8M, A182 F304 / F316		1000PSI, 2000PSI	1/4" TO 4"	200,000	PCS
<b>MINING</b>	SS BALL VALVE FLANGED END	A351 CF8 / CF8M, A182 F304 / F316		150#, 300#, 600#	1/2" TO 24"	3,000	PCS
<b>PULP</b>	SS GATE, GLBOE, CHECK VALVE	A351 CF8 / CF8M (CASTING)	API 600	150#, 300#, 600#	2" TO 24"	800	PCS
	SS GATE, GLBOE, CHECK VALVE	A182 F304 / F316 (FORGED)	API 602	CLASS 800	1/2" TO 2"	200	PCS
	SS SANITARY BUTTERFLY VALVE	AISI 304, 316L	3A, SMS, DIN	( SANITARY )	1" TO 4"	4,000	PCS
	SS SANITARY BALL VALVE	AISI 304, 316L	3A, SMS, DIN	( SANITARY )	1" TO 4"	2,000	PCS
	SS PLUG VALVE	DUPLEX 2205		150#	1" TO 4"	50	PCS
	SS KNIFE GATE VALVE	AISI 316		150#	2" TO 24"	100	PCS
	SS NEEDLE VALVE	AISI 316		6000PSI, 10000PSI	1/8" TO 1"	100	PCS
	CS GATE, GLBOE, CHECK VALVE	A216 WCB (CASTING)	API 6D, AP I600	150# TO 1500#	2" TO 24"	500	pcs
	CS GATE, GLBOE, CHECK VALVE	A105 (FORGED)	API 602	CLASS 800	1/2" TO 2"	500	PCS
	CAST IRON VALVE	A126 CL.B		125#	2" TO 24"	1,500	PCS
	CAST IRON RESILIENT VALVE	A126 CL.B	UL, FM	125#	2" TO 10"	100	PCS
	BUTTERFLY VALVE	A126 CL.B		150#, 300#	2" TO 60"	4,500	PCS
	BUTTERFLY VALVE	A351 CF8M		150#, 300#	2" TO 24"	100	PCS
	HIGH PERFORMANCE BUTTEFLY DOUBLE & TRIPLE OFFSET	A216 WCB, A182 F316	API609	150#, 300#	2" TO 24"	200	PCS
	CS DUAL PLATE WAFER CHECK	A126, A216 WCB	API 594	125# TO 1500#	2" TO 48"	200	PCS
	SS DUAL PLATE WAFER CHECK	A351 CF8 / CF8M	API 594	150# TO 300#	2" TO 24"	200	PCS
	CS Y-STRAINER	A126 / A216 WCB		150#	1/2" TO 12"	300	PCS
	SS Y-STRAINER	A351 CF8 / CF8M		150#	1/2" TO 12"	1,000	PCS
	STUD BOLT & NUT	A193 B7 / A194 2H			1/2" TO 3-1/2"	500	MT
		A193 B8 / A194 GR.8			1/2" TO 3-1/2"	100	MT



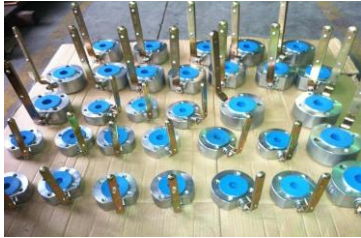
**UNICIMA CORPORATION**

Kitamura Bldg. 2-6-16 Yaesu Chuo-ku, Tokyo 104-0028, Japan.

Tel: 81-3-3516-1020 Fax: 81-3-3272-1281 t.nakamikawa@unicima.com <http://www.unicima.com>

**ucm BRAND BALL VALVE**

\*\*\*\*\*



FORGED A105 1"x ANSI 600LBS



UCM PNEUMATIC ACTUATOR



**UNICIMA BRAND  
ELECTRIC ACTUATOR  
NUCOM SERIES.**

**NEW !!! MARINE BALL VALVE WITH LLOYD'S REGISTER**



FOR INDONESIA  
A216 WCB BODY



FOR PERU  
A216 WCB BODY



FORGED A105  
14" x ANSI 600LBS  
FOR PETRONAS IN MALAYSIA



FOR COLOMBIA  
A216 WCB BODY



12"x ANSI 900LBS **LF2 BODY** FOR **LNG MALAYSIA**





CARBON SEAT



CRYOGENIC BALL VALVE  
- 196 DEGREE C.  
10" 150LBS BUTT WELD END  
TRUNNION TYPE

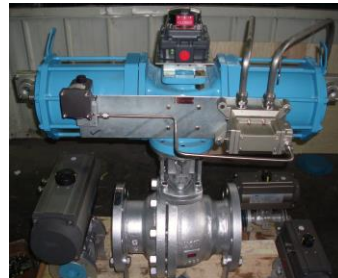
20" x ANSI 150LBS 316SS TRUNNION  
& SMALL CARBON STEEL BALL VALVE  
FOR POLYACETAL PLANT IN THAILAND



ELECTRIC BALL VALVE



HIGH PRESSURE JACKET BALL VALVE  
3/4" 600LBS FLANGED END  
FLOATING  
METAL SEAT



HIGH SPEED (1S) BALL VALVE  
6" 300LBS FLANGED END  
FLOATING TYPE  
METAL SEAT



CASTED A351 CF8M 1"x ANSI 1500LBS  
FOR FABRICATOR SHELL IN MALAYSIA

**UCM** BRAND BALL VALVE

\*\*\*\*\*



6" x 2500LBS A105N BODY / PEEK SEAT



3"x 2500LBS 316SS BODY/PEEK SEAT



# EXHIBITION

COLOMBIA



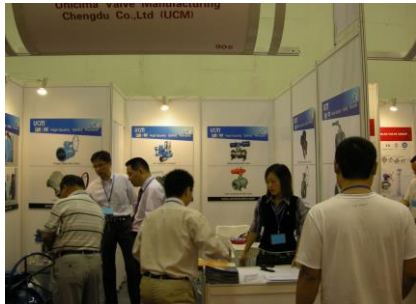
COLOMBIA



COLOMBIA



VALVE WORLD IN CHINA



CHILE



INDONESIA



INDONESIA

